

Oxitone<sup>®</sup>

Medical Follow-up Made Effortless



A Full-Suite Medical  
Continuous Care Solution

# Healthcare Upgrade for High-risk Patients

## The Need

Failures of care coordination and timely care delivery resulted in about \$150 billion in annual wasteful spending. The available solutions merely provide episodic measurements, produce discontinuous patient data, and therefore lead to decision-making based on incomplete information. Patients need a prompt response to emergencies. Physicians need an easy and timely follow-up with patients.



*Clinician  
overburdened*



*Manual and  
episodic care*



*Missed adverse  
event*

## Follow-Up 1000 Patients In 1 Click

Follow-up of chronic patients is a costly challenge. Oxitone® has developed a full-suite, FDA-cleared solution for continuously generating automated medical supervision. In one click, clinicians can unlock patients' real-time intelligent insights and effortlessly help thousands of high-risk patients. Oxitone boosts value-based healthcare by delivering extraordinary patient, clinical and economical outcomes at reduced medical utilization/cost.

### DIGITAL CONTINUOUS CARE model

#### Traditional Remote Care

- Episodic data taken occasionally and sporadically
- Off-line & asynchronous care
- Post-event, threshold-based alert, often false
- Costly, "manual" follow-up

#### Digital Continuous Care

- Accurate, real-time continuous data flow
- 24/7 synchronous care flow
- Trained to predict and avoid adverse events including death.
- "Automated" follow-up

## OXITONE'S Full-Suite Solution



# System Components



**Oxitone 1000M** - World's First FDA-cleared Wrist-sensor Pulse Oximetry Monitor

- No fingertip probe
- Bluetooth
- Rechargeable long life battery.
- Wearable, easy to use
- FDA-cleared
- CE Mark certified



**Patient/Caregiver App** - Patients keeping compliant with their care plan

- Real-time digital biomarkers
- Symptoms self-assessment (CCQ)
- Color coded notifications
- Easy connection to care team
- Daily, weekly and monthly reports
- Patient educational tools



**Advanced, Integrated SaaS** -

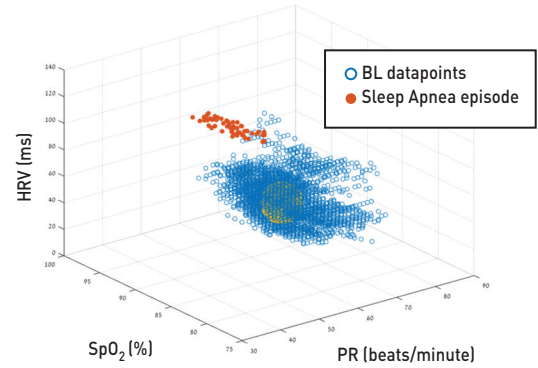
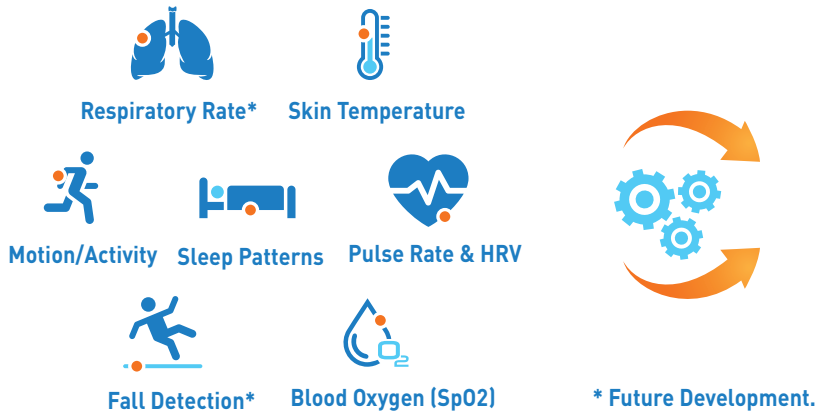
Physicians effortlessly enhance patient outcome

- Physicians' web portal
- Secured cloud Infrastructure
- Data analytics tools
- Dashboard and reports
- API integration tools
- Data delivery on demand

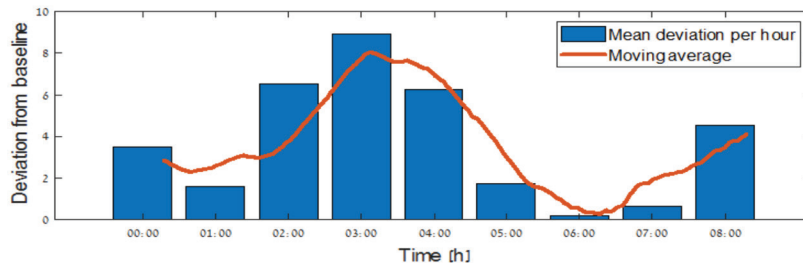
# Effortless Rapid Decision Making

Vital Parameters, 1 sec resolution

Patient's Base-line with anomaly

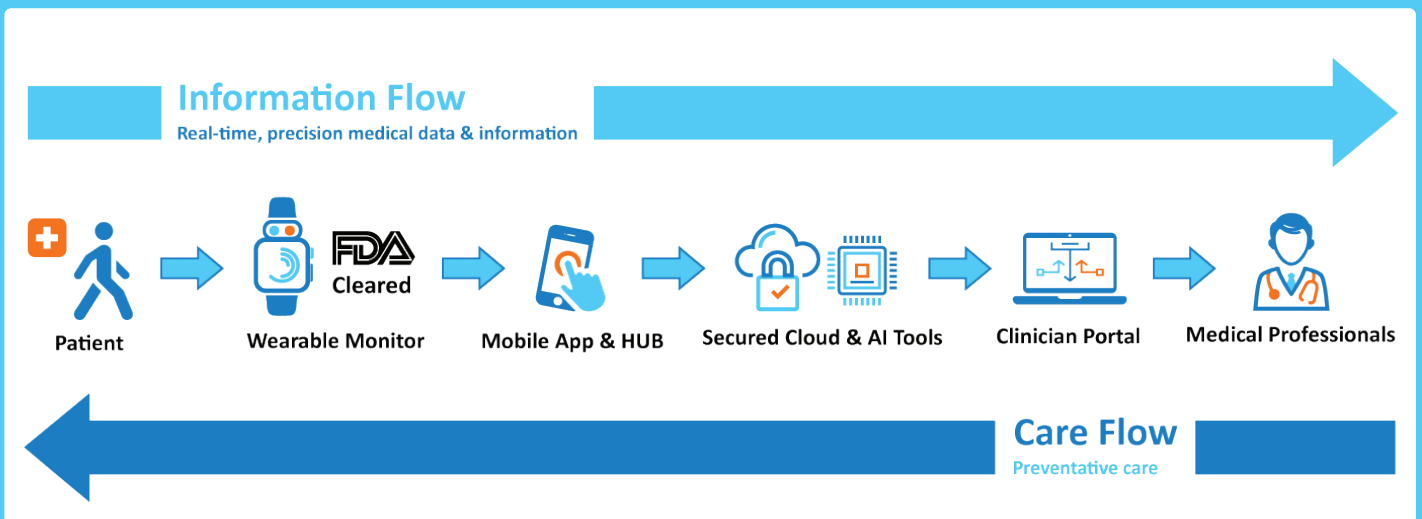


Classification of patients into clearly defined diagnostic categories & severities  
 Predictive trends and multi-parameter baseline variations  
 Immediate & prolonged clinical response to interventions



Patient's Real-Time Risk Status

## Information-Care Flow Chart



# New Opportunities for Healthcare Professionals

- Supportive supervision for primary care
- Enhanced sleep / stress monitoring services
- Advanced, long-term continuous RPM programs



# New Opportunities for Healthcare Providers

- Low-cost follow-up after discharge
- Reduce labor cost and care utilization
- Services enhancement & upsells



# Key Benefits for High-Risk Chronic Patients

- Rapid clinical follow-up
- Keeping out of hospital
- Peace of mind



## Key Use Cases



### **Pulmonary (COPD)**

Early identification of COPD exacerbation; timely interventions and prevention of rehospitalizations



### **Heart Failure (CHF)**

Continuous tracking of cardiovascular indices, rapid identification of worsening, call for interventions



### **Sleep (OSA) / Stress**

An earlier diagnosis of OSA using Oxitone resulting in improved job performance within a matter of days





## About Us

**Oxitone®** is a pioneering digital continuous care model with its innovative AI-powered RPM solution that includes three patented innovations: an FDA-cleared wrist-sensor multi-parameter medical monitor and SaaS clinician's portal powered by AI medical intelligence tools. The combination of AI's predictive power with the convenience of wearable medical technology enables clear definition of patient risk categories, speeds up care delivery and accelerates access to care. Our mission is to transform chronic disease management.

# One step away from achieving your remote patient care goals

## Contact Us

### US Office:

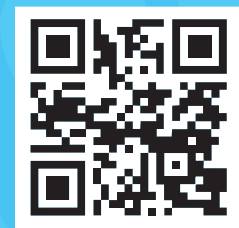
Upward Hartford  
20 Church Str., Mezzanine  
Hartford CT 06103, USA

T: +1-925-271-7676

### Israel Office:

17 Atir Yeda Str.,  
Kfar Saba  
Israel 4464312

T: +972-9-834-6731



*[info@oxitone.com](mailto:info@oxitone.com) | [www.oxitone.com](http://www.oxitone.com)*